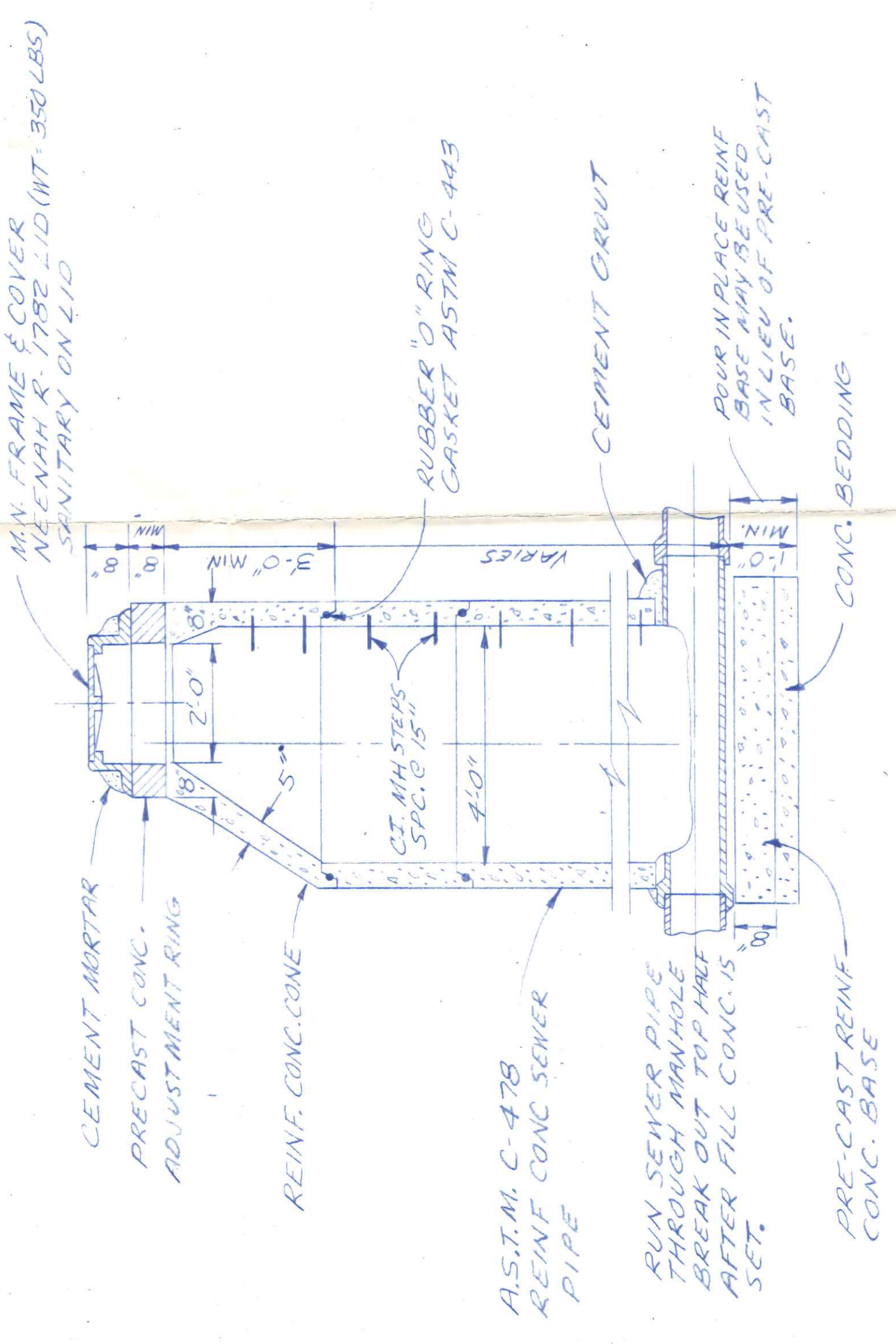


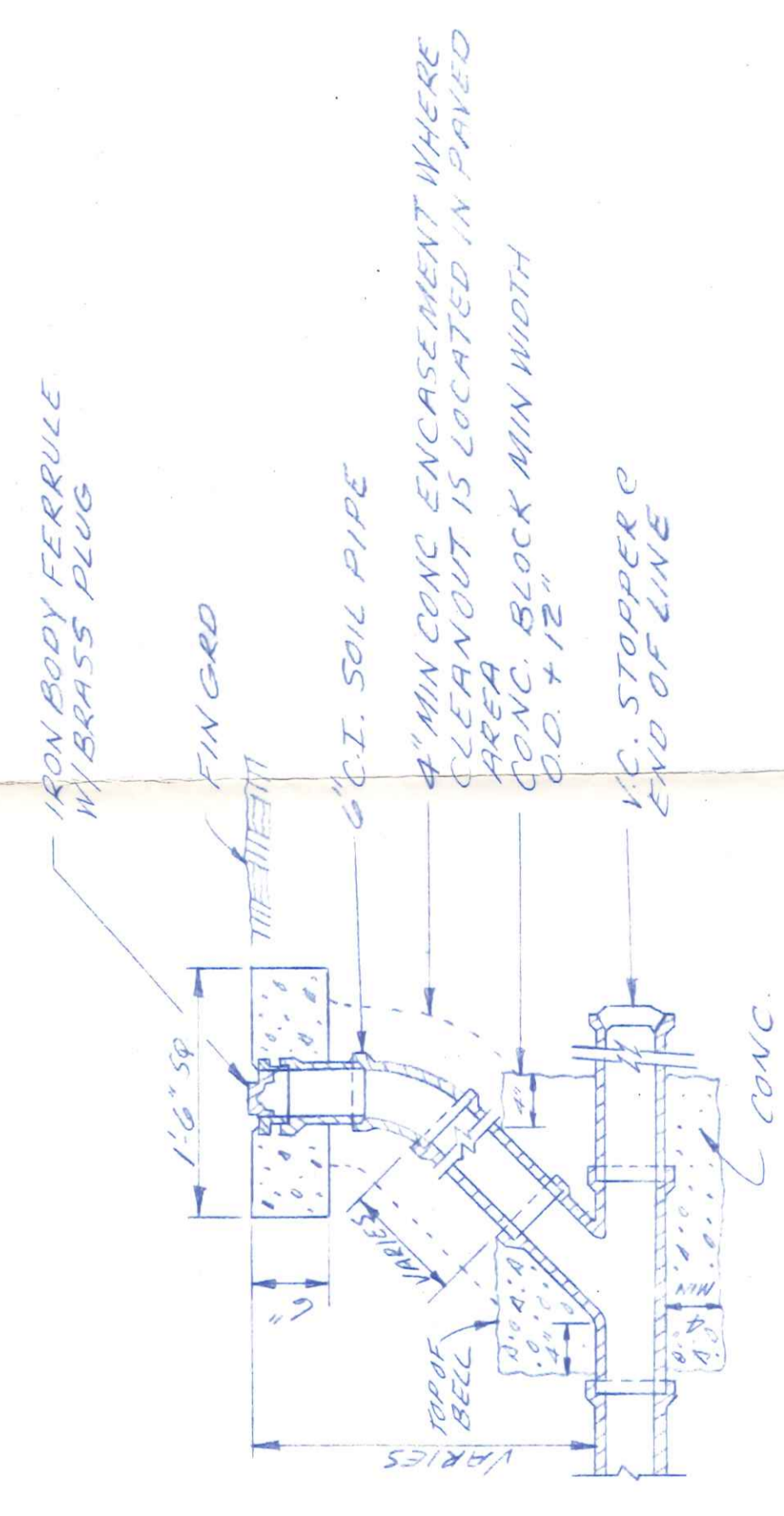
CPE 537501

NO.	AMOUNT	UNIT	DESCRIPTION

N & W RAILROAD
TOP OF RAIL 680.32

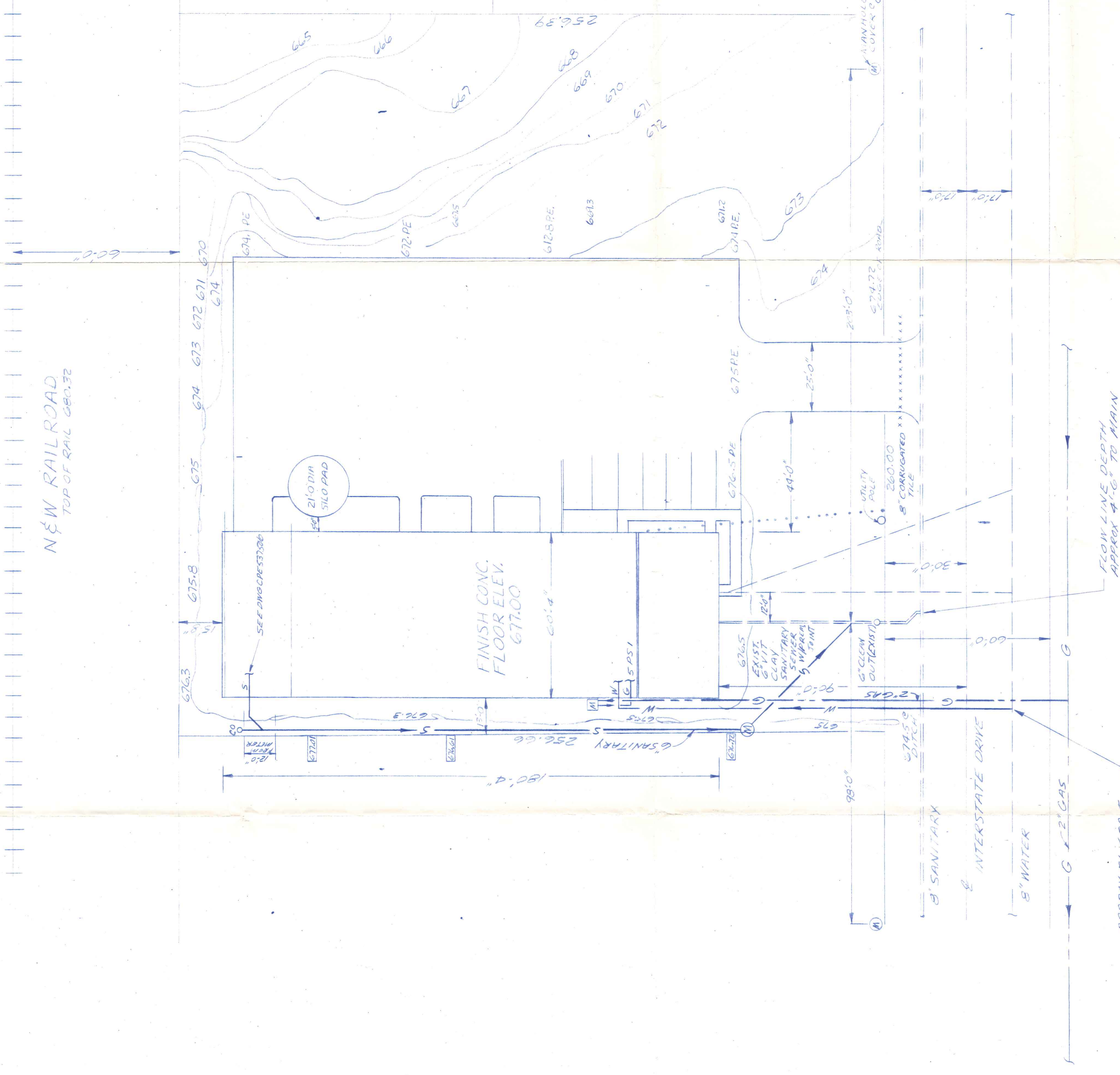


TYPICAL MANHOLE



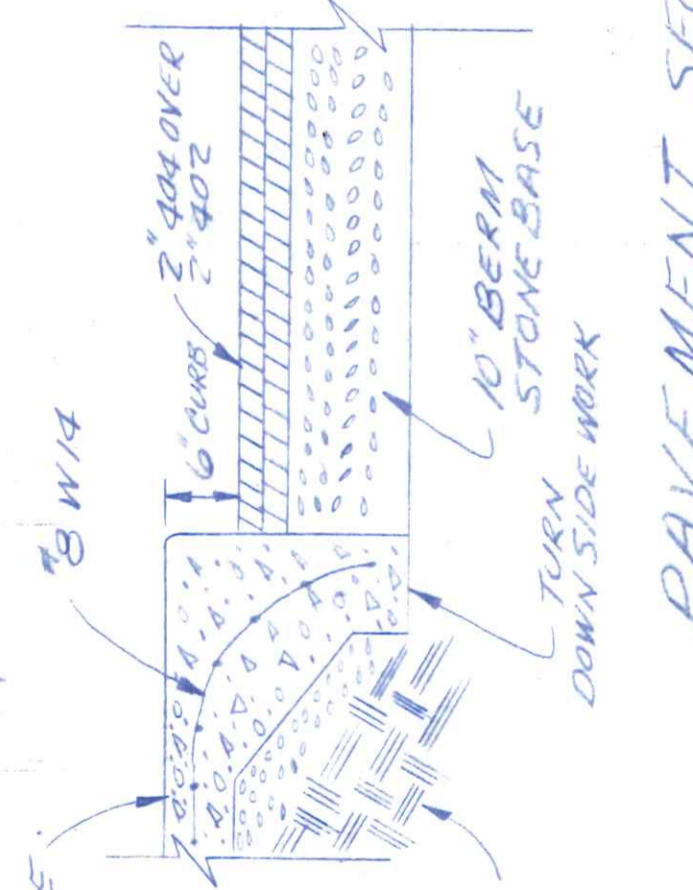
TYPICAL CLEANOUT

- NOTES:
- ALL WORK & MATERIAL SHALL BE IN ACCORDANCE WITH CURRENT CONSTRUCTION SPEC. OF THE CITY OF NAPOLEON, HENRY COUNTY & THE OHIO DEPARTMENT OF TRANSPORTATION.
 - THE LOCATION OF EXISTING UTILITIES AS SHOWN ON THESE PLANS ARE APPROXIMATE. THE EXACT LOCATION SHALL BE THE RESPONSIBILITY OF THE CONTRACTOR. THE CONTRACTOR SHALL NOTIFY EACH RESPECTIVE UTILITY COMPANY PRIOR TO TIME OF CONSTRUCTION.
 - ALL PIPING SHALL BE PLACED ON A MINIMUM OF FOUR INCHES OF AN APPROVED GRANULAR BEDDING. PIPING OUTSIDE THE LIMITS OF FIVE FEET FROM THE EDGE OF PAVEMENT OR DRIVE SHALL BE BACK FILLED WITH THOROUGHLY TRAMPED GRANULAR MATERIAL TO A HEIGHT OF SIX INCHES ABOVE THE TOP OF PIPE. THE REMAINDER OF TRENCH SHALL BE BACK FILLED WITH EXCAVATED MATERIAL FREE FROM DEBRIS. THE PIPE WITHIN FIVE FEET OF THE EDGE OF PAVEMENT OR DRIVE & UNDER PAVEMENT OR DRIVE SHALL BE BACK FILLED WITH APPROVED GRANULAR MATERIAL TO THE BOTTOM OF THE PAVEMENT OR DRIVE. GRANULAR BEDDING MATERIAL SHALL BE CRUSHED STONE MEETING THE GRADING REQ'D BY ITEM 703.09 OHIO DEPT. OF TRANS. SPEC. GRANULAR BACKFILL SHALL BE NO. 67 AGGREGATE.



PLOT LEGEND

676	EXISTING ELEV.
678	NEW ELEV.
679 PE	PAVEMENT ELEV.
---	SANITARY SEWER LINE
---	WATER LINE
(M)	MANHOLE
....	ELECTRIC ENTRY
-6-	NEW 2" GAS LINE
S-	NEW 8" SANITARY SEWER
W-	NEW 8" WATER LINE
(M)	NEW GAS METER



D. Miller State

APPR. NO.	DIR.	DATE	BY	REVISION	DESCRIPTION	ZONE

APPROVED	DATE	BY	FOR

USE ON	REVISION	MATERIAL

TOLERANCES	UNLESS OTHERWISE SPECIFIED	FINISH

ITEM NO.	DESCRIPTION	QUANTITY	UNIT

PROJECT	NO.	DATE

CONTRACT	NO.	DATE

SCALE: 1/8" = 1'-0"

ISSUED BY: 04/24/5

CHECKED BY: 04/24/5

SCALE: 1/8" = 1'-0"

ISSUED BY: 04/24/5

CHECKED BY: 04/24/5

PROJECT: CPE 537501

CONTRACT: SUPPLY RAILROAD PRODUCTION PLANT

DATE: 04/24/5

DRAWN BY: 04/24/5

CHECKED BY: 04/24/5

VICINITY MAP

PAVEMENT SECTION

4 3 2 1 A B C D